

Ordering codes

Description example:

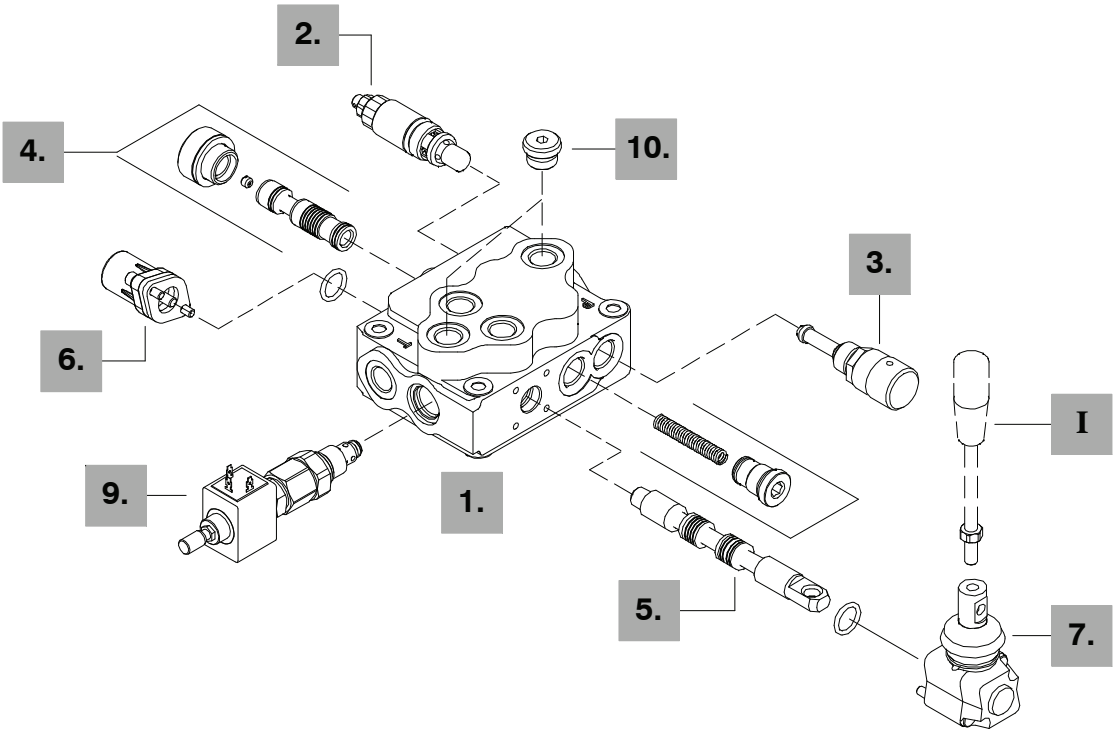
Valve setting in bar

SDM105 / 1 - P (JG3-120) M / 2 10 L / EL-12VDC - .....

1. 2. 3. 5. 6. 7. 9. 10.

SDM105 / 1 - P (JG3-120) M / 18ES3 / LT - 12VDC

8.



1. Body kit \*

TYPE	CODE	DESCRIPTION
1-P	5KC5013000	Parallel, 1 section

Include boby and seals.

2. Inlet relief options page 12

TYPE	CODE	DESCRIPTION
<u>VMD5 direct pressure relief valve type J</u>		
Standard setting is referred to 10 l/min flow.		
(JG2-63)	5KIT105412	Range 40 to 63 bar / 580 to 900 psi standard setting 63 bar / 900 psi
(JG3-120)	5KIT105413	Range 50 to 200 bar / 725 to 2900 psi standard setting 120 bar / 1750 psi
(JG4-220)	5KIT105414	Range 160 to 315 bar / 2300 to 4600 psi standard setting 220 bar / 3200 psi
SV	XTAP623282	Relief valve blanking plug

NOTE (\*) - Codes are referred to **BSP** threads.

## Ordering codes

**3. Flow controls** *page 124*

TYPE	CODE	DESCRIPTION
<b>M</b>	XCAR705211	Continuous fine wheel regulation
<b>G</b>	XCAR705202	Screw regulation with locking nut

**4. Compensator kit**

TYPE	CODE	DESCRIPTION
-	5CAS316065	Compensator kit

**5. Spool options** *page 125*

TYPE	CODE	DESCRIPTION
<b>1</b>	3CU1210730	Double acting, 3 positions, with A and B closed in neutral position
<b>2</b>	3CU1225730	Double acting, 3 positions, with A and B open to tank in neutral position
<u>Special spools for particular positioner kits</u> ..... <i>page 14</i>		
<b>5T</b>	3CU1243701	Double acting, 4 positions, floating circuit in 4 <sup>th</sup> position with spool out.

**6. “A” side spool positioners** *page 86*

TYPE	CODE	DESCRIPTION
<b>8</b>	5V08104000	With spring return in neutral position
<b>8D</b>	5V08104200	With spring return in neutral position and pin with M6 female thread for dual control
<b>8D2</b>	5V08104220	With spring return in neutral position and pin with M8 male thread for dual control
<b>8F2</b>	5V08104101	With spring return in neutral position and adjustable flow limiter
<b>19</b>	5V19104000	2 positions, with spring return in neutral position from position 1
<b>20</b>	5V19104000	2 positions, with spring return in neutral position from position 2
<b>9</b>	5V09104010	With detent in position 1 and spring return in neutral position
<b>10</b>	5V10104011	With detent in position 2 and spring return in neutral position
<b>11</b>	5V11104000	Detent in positions neutral, 1 and 2
<b>12</b>	5V12104000	Detent in positions 1 and 2
<b>15</b>	5V15104000	2 positions, detent in positions 1 and neutral
<b>16</b>	5V16104000	2 positions, detent in positions 2 and neutral
<b>9BZ</b>	5V09204010	With detent in position 1 and spring return in neutral position
<b>10BZ</b>	5V10204010	With detent in position 2 and spring return in neutral position
<b>11BZ</b>	5V11204010	Detent in positions 1 and 2 and spring return in neutral position
<b>8MG3</b>	5V08104660	With spring return in neutral position and microswitch in positions 1 and 2
<b>8P</b>	5V08104701	ON/OFF pneumatic kit
<b>8EP3</b>	5V08104735	ON/OFF 12 VDC electro-pneumatic kit
	5V08104740	ON/OFF 24 VDC electro-pneumatic kit
<b>8ED3</b>	5V08104350	ON/OFF 12 VDC electro-hydraulic kit
	5V08104351	ON/OFF 24 VDC electro-hydraulic kit
<u>Particular positioner kits for special spools</u> ..... <i>page 96</i>		
<b>13QN</b>	5V13404020	4 pos. with spring return in neutral pos. and detent in 4 <sup>th</sup> pos.: <b>for spool 5T</b>

**7. “B” side options** *page 39*

TYPE	CODE	DESCRIPTION
<b>L</b>	5LEV205000	Lever box for M10 handlever (for dimensions see LM10 for SD5 directional valve)
<b>SLP</b>	5COP105000	Without lever box, with dust-proof plate
<b>TQ</b>	5TEL105110	Flexible cable connection

**8. Complete controls** *page 46*ON/OFF solenoid control type **8ES**.**9. Solenoid pilot unloader valve** *page*

TYPE	CODE	DESCRIPTION
<b>EL-12VDC</b>	YCAR405305	With 12VDC electric control unloader valve; normally open circuit
<b>EL-24VDC</b>	YCAR405310	As previous 24VDC
<b>ELC-12VDC</b>	5CAR405330	With 12VDC electric control unloader valve; normally closed circuit
<b>ELC-24VDC</b>	5CAR405331	As previous 24VDC
<b>LT</b>	XTAP523370	Valve blanking plug

**10. Inlet and outlet selection \*** *page 79*

TYPE	CODE	DESCRIPTION
<b>PSL</b>	3XTAP722160	Side ports; need n.2 G 3/8 plugs, standard configuration (omit in valve description)
<b>PSA</b>	3XTAP722160	Upper ports; need n.2 G 3/8 plugs

**I Optional handlevers**

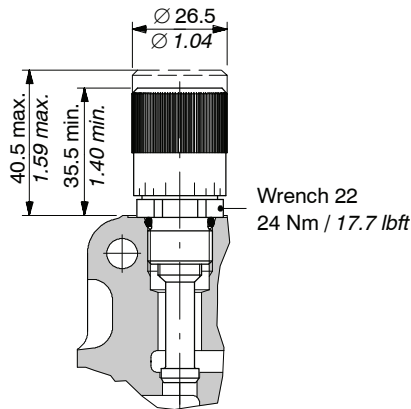
TYPE	CODE	DESCRIPTION
<b>AL01/M10x150</b>	170012015	For lever L: height 150 mm / 5.91 in

## Flow controls

Pressure compensated flow control with max. regulated flow = 45 l/min.

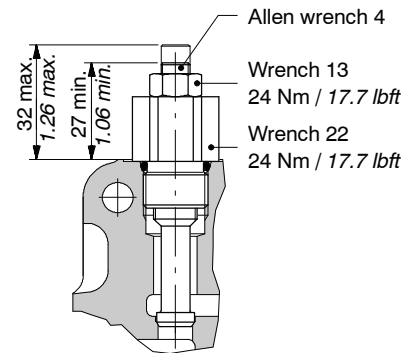
## Type M

Continuous fine wheel regulation



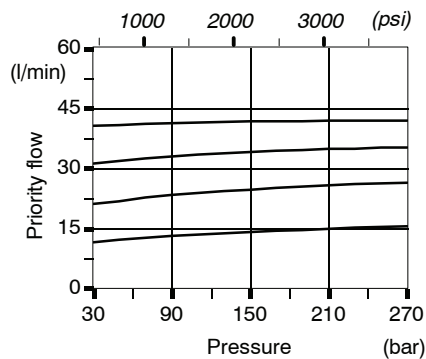
## Type G

Continuous screw regulation with locking nut.



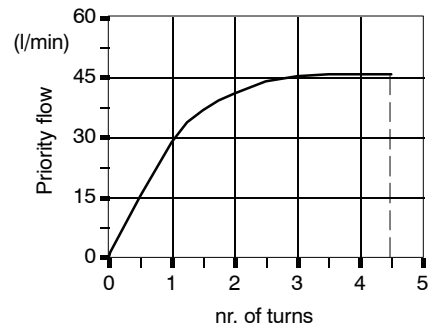
Pressure-flow diagram

$Q_{in} = 45 \text{ l/min}$

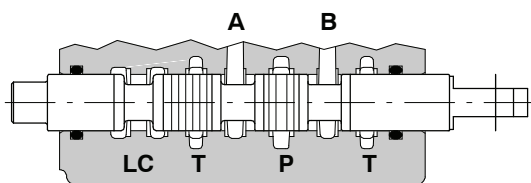


Flow regulation diagram

$Q_{in} = 45 \text{ l/min} - P = 100 \text{ bar (1450 psi)}$



## Type 1



P-A-B-T closed, with flow through line (LC) open

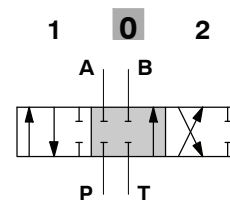
+ 5,5 mm / 0.22 in

(1) ►

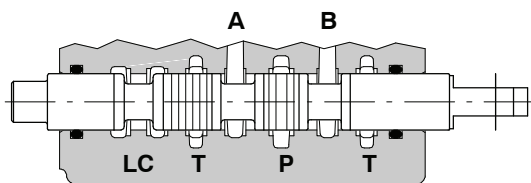
◄ ► (0)

◄ (2)

- 5,5 mm / 0.22 in



## Type 2



P closed, A-B→T, flow through line (LC) open

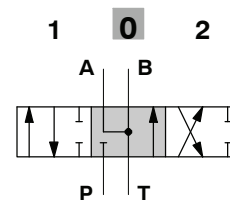
+ 5,5 mm / 0.22 in

(1) ►

◄ ► (0)

◄ (2)

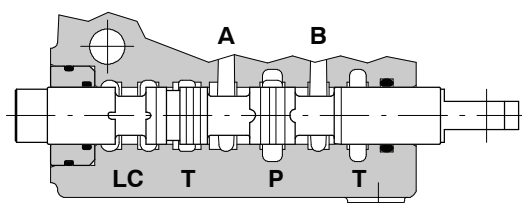
- 5,5 mm / 0.22 in



## Type 5T

It needs special body with extra machining: for information please contact Sales Department.

This spool must be coupled with positioner type **13QN** (see page 96).



P-A-B-T closed, with flow through line (LC) open

+ 9 mm / 0.35 in

(3) ►►

(1) ► + 4.5 mm / 0.18 in

◄ ► (0)

◄ (2)

- 4.5 mm / 0.18 in

