

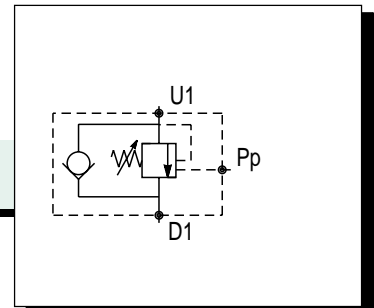
INDICE

VOC		pag.22
VOSL/SC - .../F- .../CC-		pag.23
VOSL- .../F- .../CC-		pag.23
VOSLP/SC - .../F- .../CC-		pag.24
VOSLP- .../F- .../CC-		pag.24
VODL/SC- .../F- .../CC-		pag.25
VODL- .../F- .../CC-		pag.25
VOSLP/SC/RO		pag.26
VOSL/A - VOSLP/A		pag.26
VODL/SC/A- VODL/A		pag.27
VOSL/ML		pag.27
VODL/ML		pag.28
VABAL- VABAL/SF		pag.28

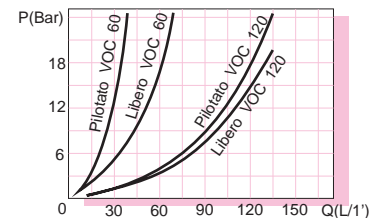
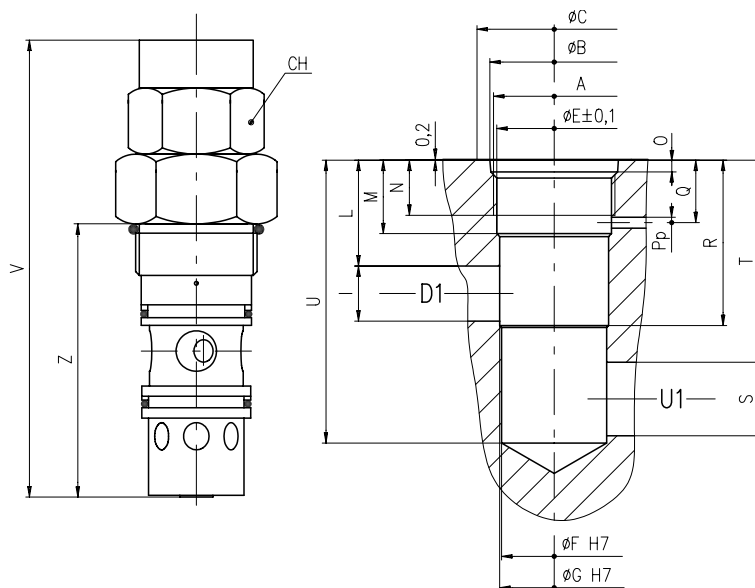


VALVOLE DI CONTROLLO DISCESA E DI BLOCCO BILANCIATE  
SEMPLICE EFFETTO A CARTUCCIA  
SINGLE OVERCENTER VALVES, CARTRIDGE CONSTRUCTION

Tipo **VOC...**



**MATERIALI**  
CORPO: Acciaio (350Bar)  
PART. INTERNI: Acciaio Cmt-Tmp-Rett



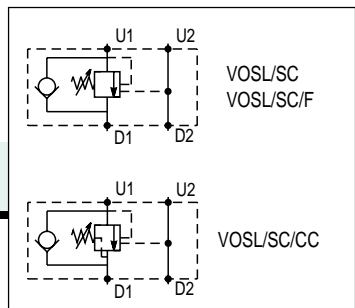
Tipo	A	B	C	E	F	G	H	I	L	M	N	O	Pp	Q	R	S	T	U	V	Z	CH	Q(L/1')	Pres.(Bar)	Rapp.Pil.
VOC 60	M 26x1,5	27,8	35	24,2	22	23	47	8	28	17,5	16	3,2	3	16	36	8	58	68	104	64	30	60	350	1:3,5
VOC 120	1"5/16-12UNF	34,5	42	31,2	28,6	29,6	57	15	29	20	16	3,2	3	17	45	20	55	77	124,5	74,5	38	120	350	1:4

VALVOLE DI CONTROLLO DISCESA E DI BLOCCO BILANCIATE SEMPLICE EFFETTO (IN LINEA - FLANGIABILI - PER CENTRO CHIUSO)  
 SINGLE OVERCENTER VALVES, INTERNAL PILOT OPERATED  
 (IN LINE - FACE MOUNTING - FOR CLOSED CENTRE)

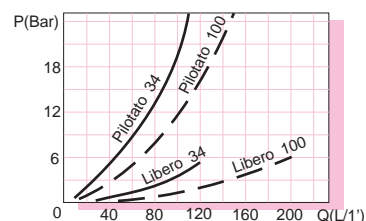
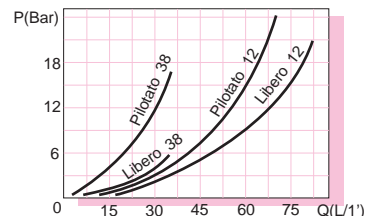
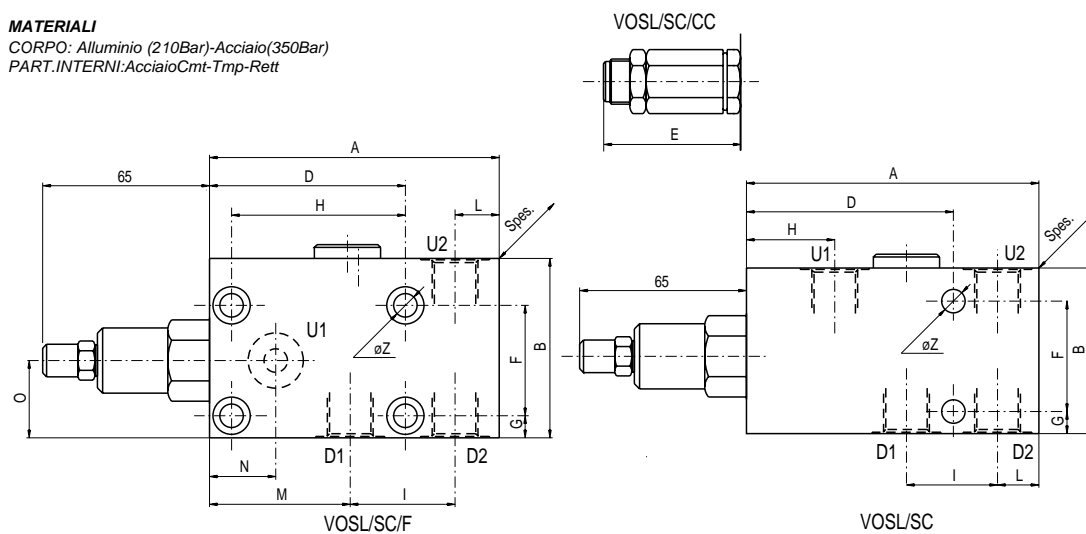


Tipo **VOSL/SC.. VOSL/SC/F.. VOSL/SC/CC..**

*Senza Cartuccia*



**MATERIALI**  
 CORPO: Alluminio (210Bar)-Acciaio(350Bar)  
 PART.INTERNI: AcciaioCmt-Tmp-Rett



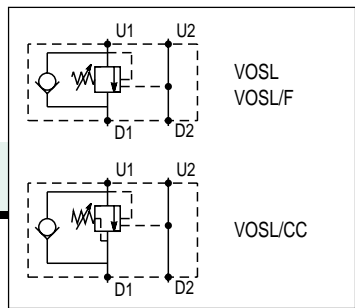
Tipo	D1-D2-U2	U1	A	B	Spes.	D	E	F	G	H	I	L	M	N	O	Z	Q(L/1')	Rapp.Pil	molle(Bar)	
VOSL/SC 38	VOSL/SC/CC 38	G 3/8	G 3/8	106	60	30	75	52	40	8	32	33	15	-	-	-	8,5	40	1:4 (1:3)	0-210 50-350 100-700
VOSL/SC 12	VOSL/SC/CC 12	G 1/2	G 1/2	116	70	35	80	60	48	8	32	40	16	-	-	-	8,5	75	1:7 (1:3)	
VOSL/SC 34	VOSL/SC/CC 34	G 3/4	G 3/4	136	90	40	92	60	70	10	34	48	20	-	-	-	10,5	120	1:7 (1:3)	
VOSL/SC100	VOSL/SC/CC 100	G 1"	G 1"	185	100	60	116	60	80	10	35	70	32	-	-	-	10,5	180	1:7 (1:3)	
VOSL/SC/F 38		G 3/8	7	106	60	30	75	-	40	8	63,5	33	15	58	28	27	8,5	40	1:4 (1:3)	
VOSL/SC/F 12		G 1/2	10	116	70	35	80	-	48	8	67	40	16	68	30	31	8,5	75	1:7 (1:3)	
VOSL/SC/F 34		G 3/4	13	136	90	40	92	-	70	10	75	48	20	82	36	36	10,5	120	1:7 (1:3)	

VALVOLE DI CONTROLLO DISCESA E DI BLOCCO BILANCIATE SEMPLICE EFFETTO (IN LINEA - FLANGIABILI - PER CENTRO CHIUSO)  
 SINGLE OVERCENTER VALVES, INTERNAL PILOT OPERATED  
 (IN LINE - FACE MOUNTING - FOR CLOSED CENTRE)

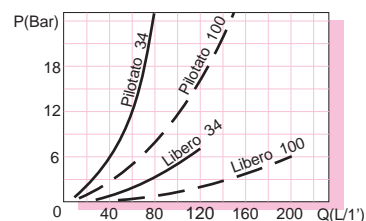
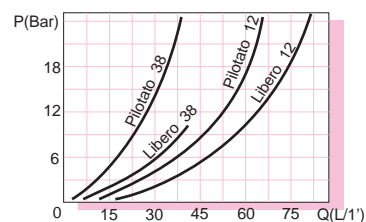
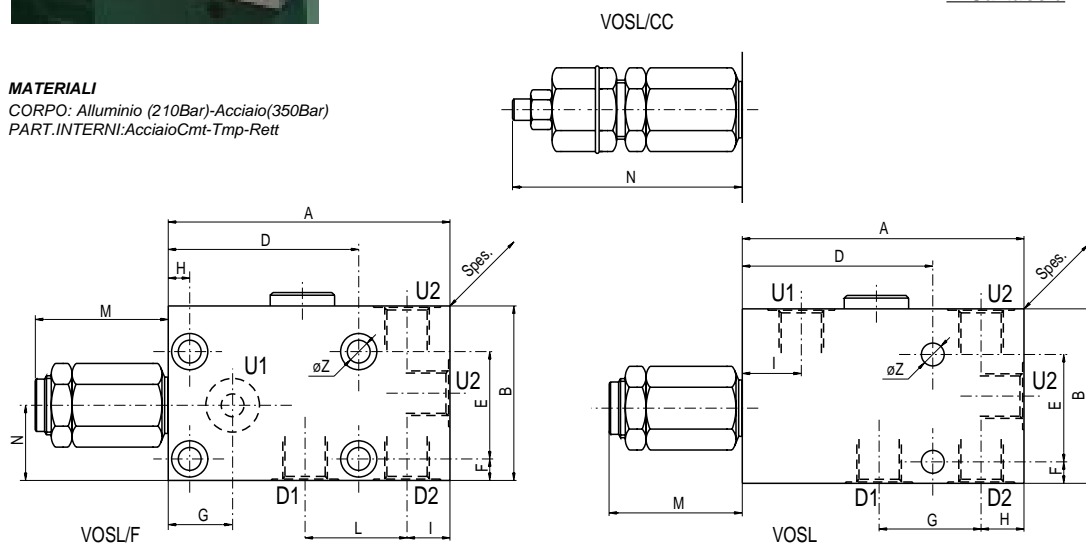


Tipo **VOSL... VOSL/F... VOSL/CC...**

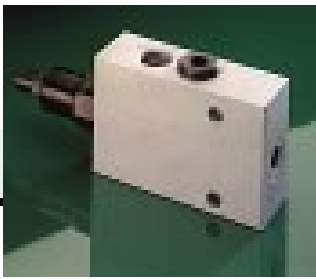
*A Cartuccia*



**MATERIALI**  
 CORPO: Alluminio (210Bar)-Acciaio(350Bar)  
 PART.INTERNI: AcciaioCmt-Tmp-Rett



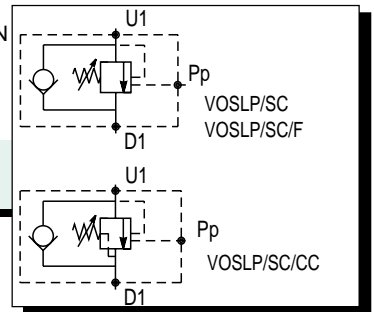
Tipo	D1-U1-U2	U1	A	B	Spes.	D	E	F	G	H	I	L	M	N	Z	Q(L/1')	Rapp.Pil	molle(Bar)	
VOSL 38	VOSL/CC 38	G 3/8	G 3/8	105	65	30	71	40	8	38	17,5	22	-	52	92	8,5	37	1:4 (1:3)	0-210 50-350 100-700
VOSL 12	VOSL/CC 12	G 1/2	G 1/2	112	70	35	75	48	8	44	17,5	21,5	-	57	94	8,5	70	1:7 (1:3)	
VOSL 34	VOSL/CC 34	G 3/4	G 3/4	140	90	40	88	70	10	53	22	30	-	66	102	10,5	100	1:7 (1:3)	
VOSL 100	VOSL/CC 100	G 1"	G 1"	174	100	60	110	80	10	66	32	30	-	66	99	10,5	180	1:7 (1:3)	
VOSL/F 38		G 3/8	8	105	65	30	71	40	8	24	8	16	38	52	27	8,5	37	1:4 (1:3)	
VOSL/F 12		G 1/2	10	112	70	35	75	48	8	25	8	17,5	44	57	30	8,5	70	1:7 (1:3)	
VOSL/F 34		G 3/4	15	140	90	40	88	70	10	32	13	22	53	66	36	10,5	100	1:7 (1:3)	
VOSL/F 100		G 1"	19	174	100	60	110	55	10	35	10	32	66	66	37	10,5	180	1:7 (1:3)	



VALVOLE DI CONTROLLO DISCESA E DI BLOCCO BILANCIATE SEMPLICI CON PILOTA ESTERNO (IN LINEA - FLANGIABILI - PER CENTRO CHIUSO)  
 SINGLE OVERCENTER VALVES, EXTERNAL PILOT OPERATED  
 (IN LINE - FACE MOUNTING - FOR CLOSED CENTER)

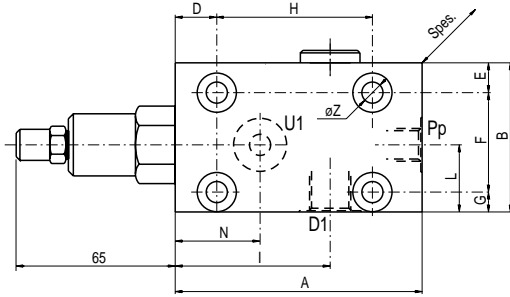
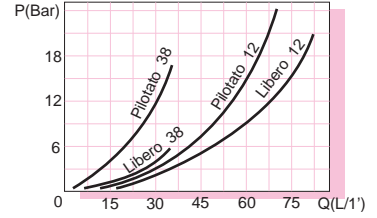
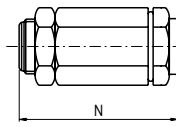
Tipo VOSLP/SC... VOSLP/SC/F... VOSLP/SC/CC...

Senza Cartuccia

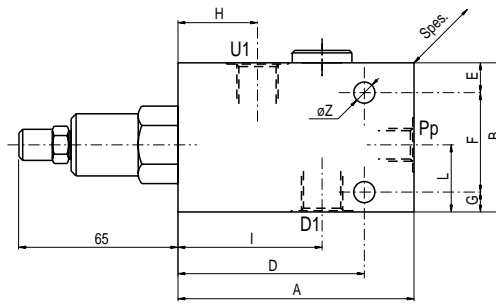


**MATERIALI**  
 CORPO: Alluminio (210Bar)-Acciaio(350Bar)  
 PART.INTERNI:AcciaioCmt-Tmp-Rett

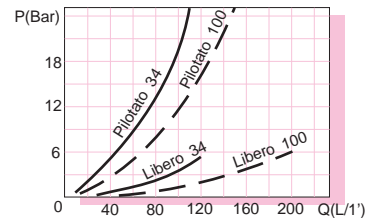
VOSLP/SC/CC



VOSLP/SC/F



VOSLP/SC



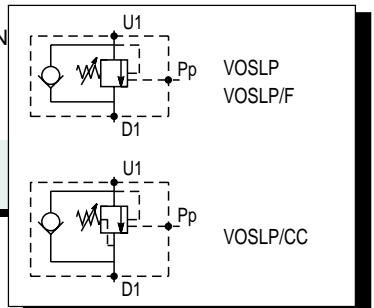
Tipo	D1	U1	Pp	A	B	Spes.	D	E	F	G	H	I	L	N	Z	Q(L/1')	Rapp.Pil	molle(Bar)	
VOSLP/SC 38	VOSLP/SC/CC 38	G 3/8	G 3/8	G 1/4	102	60	30	75	12	40	8	32	58	27	52	8,5	40	1:4 (1:3)	0-210
VOSLP/SC 12	VOSLP/SC/CC 12	G 1/2	G 1/2	G 1/4	110	70	35	80	14	48	8	32	60	31	60	8,5	75	1:7 (1:3)	50-350
VOSLP/SC 34	VOSLP/SC/CC 34	G 3/4	G 3/4	G 1/4	123	90	40	92	10	70	10	34	68	36	60	10,5	120	1:7 (1:3)	100-700
VOSLP/SC100	VOSLP/SC/CC 100	G 1"	G 1"	G 1/4	153	100	60	116	10	80	10	35	83	38	60	10,5	180	1:7 (1:3)	
VOSLP/SC/F 12		G 1/2	9	G 1/4	110	70	35	13	14	48	8	67	50	31	30	8,5	75	1:7 (1:3)	



VALVOLE DI CONTROLLO DISCESA E DI BLOCCO BILANCIATE SEMPLICI CON PILOTA ESTERNO (IN LINEA - FLANGIABILI - PER CENTRO CHIUSO)  
 SINGLE OVERCENTER VALVES, EXTERNAL PILOT OPERATED  
 (IN LINE - FACE MOUNTING - FOR CLOSED CENTER)

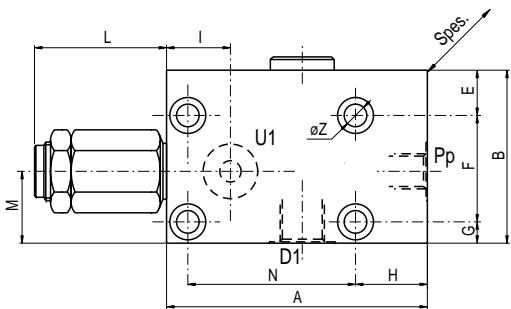
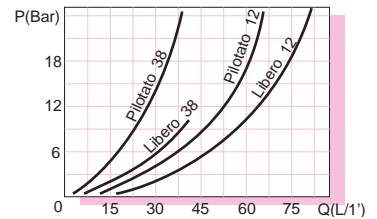
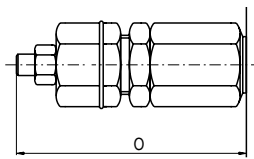
Tipo VOSLP... VOSLP/F... VOSLP/CC...

A Cartuccia

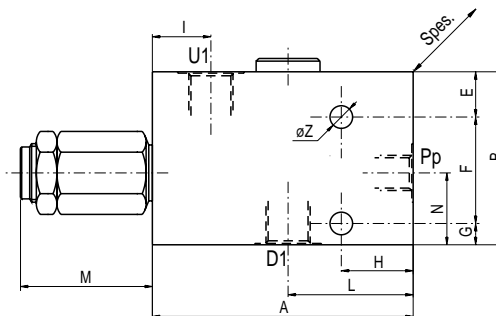


**MATERIALI**  
 CORPO: Alluminio (210Bar)-Acciaio(350Bar)  
 PART.INTERNI:AcciaioCmt-Tmp-Rett

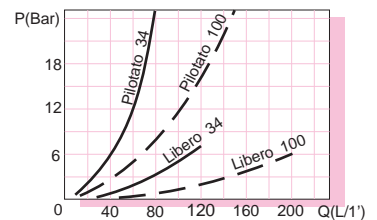
VOSLP/CC



VOSLP/F



VOSLP



Tipo	D1	U1	Pp	A	B	Spes.	E	F	G	H	I	L	M	N	O	Z	Q(L/1')	Rapp.Pil.	molle(Bar)
VOSLP 38	VOSLP/CC 38	G 3/8	G 3/8	G 1/4	98	65	30	17	40	8	27	22	47	52	27	92	8,5	37	1:4 (1:3)
VOSLP 12	VOSLP/CC 12	G 1/2	G 1/2	G 1/4	100	70	35	14	48	8	25	21,5	49,5	57	31	94	8,5	70	1:7 (1:3)
VOSLP 34	VOSLP/CC 34	G 3/4	G 3/4	G 1/4	120	90	40	10	70	10	32	30	55	66	36	102	10,5	100	1:7 (1:3)
VOSLP 100	VOSLP/CC 100	G 1"	G 1"	G 1/4	140	100	60	10	80	10	30	30	64	66	37	102	10,5	180	1:7 (1:3)
VOSLP/F 38		G 3/8	8	G 1/4	98	65	30	17	40	8	27	24	52	27	63	-	8,5	37	1:4 (1:3)
VOSLP/F 12		G 1/2	10	G 1/4	100	70	35	14	48	8	25	25	57	30	67	-	8,5	70	1:7 (1:3)
VOSLP/F 34		G 3/4	15	G 1/4	120	90	40	10	70	10	32	32	66	36	75	-	10,5	100	1:7 (1:3)
VOSLP/F 100		G 1"	19	G 1/4	140	100	60	35	55	10	30	35	66	37	100	-	10,5	180	1:7 (1:3)

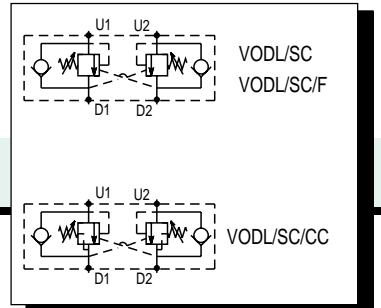
0-210  
 50-350  
 100-700



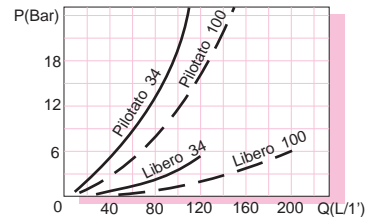
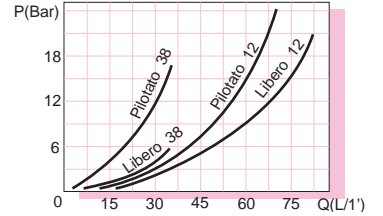
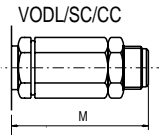
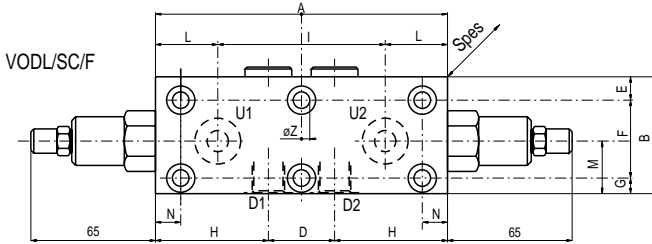
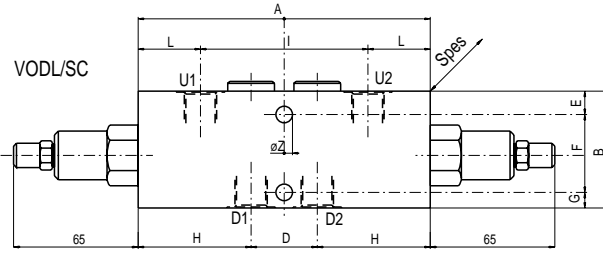
VALVOLE DI CONTROLLO DISCESA E DI BLOCCO BILANCIATE DOPPIE  
(IN LINEA - FLANGIATE - PER CENTRO CHIUSO)  
DOUBLE OVERCENTER VALVES  
(IN LINE - FACE MOUNTING - FOR CLOSED CENTER)

Tipo **VODL/SC...** **VODL/SC/F...** **VODL/SC/CC...**

Senza Cartuccia



**MATERIALI**  
CORPO: Alluminio (210Bar)-Acciaio(350Bar)  
PART.INTERNI: AcciaioCmt-Tmp-Rett



Tipo	D1-D2	U1-U2	A	B	Spes.	D	E	F	G	H	I	L	M	N	Z	Q(L/1')	Rapp.Pil.
VODL/SC 38	VODL/SC/CC 38	G 3/8	G 3/8	150	60	30	34	12	40	8	58	86	32	52	-	8,5	37
VODL/SC 12	VODL/SC/CC 12	G 1/2	G 1/2	156	70	35	36	14	48	8	60	92	32	60	-	8,5	75
VODL/SC 34	VODL/SC/CC 34	G 3/4	G 3/4	186	90	40	50	10	70	10	68	118	34	58	-	10,5	100
VODL/SC 100	VODL/SC/CC 100	G 1"	G 1"	232	100	60	66	10	80	10	83	162	35	58	-	10,5	180
VODL/SC/F 38		G 3/8	7	150	60	30	34	12	40	8	58	94	28	27	11,5	8,5	37
VODL/SC/F 12		G 1/2	9	156	70	35	36	14	48	8	60	100	28	31	10,5	8,5	75

molle (Bar)

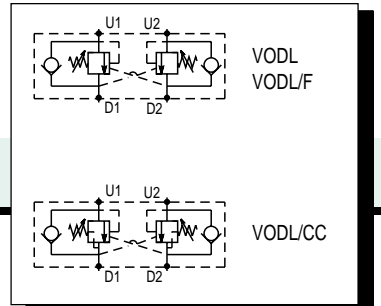
0-210  
**50-350**  
100-700



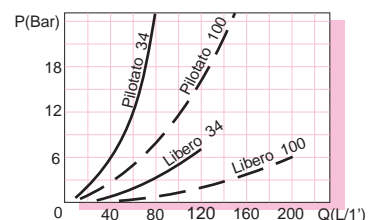
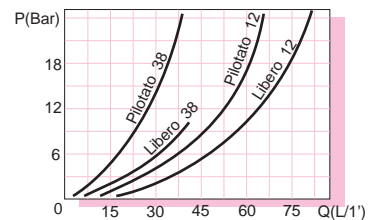
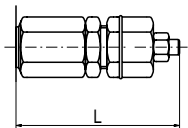
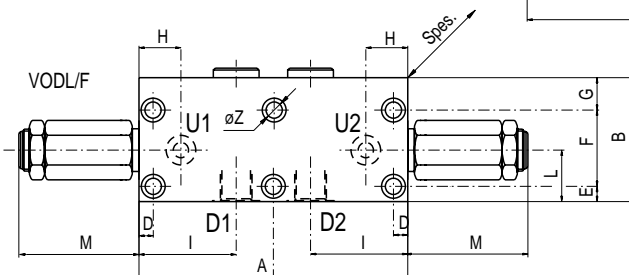
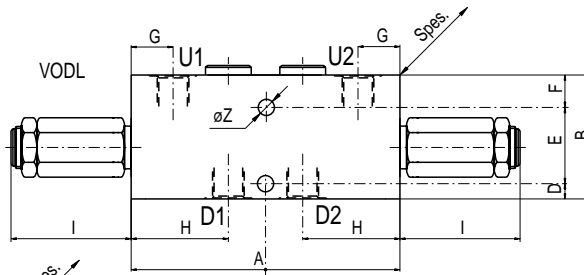
VALVOLE DI CONTROLLO DISCESA E DI BLOCCO BILANCIATE DOPPIE  
(IN LINEA - FLANGIATE - PER CENTRO CHIUSO)  
DOUBLE OVERCENTER VALVES  
(IN LINE - FACE MOUNTING - FOR CLOSED CENTER)

Tipo **VODL...** **VODL/F...** **VODL/CC...**

A Cartuccia



**MATERIALI**  
CORPO: Alluminio (210Bar)-Acciaio(350Bar)  
PART.INTERNI: AcciaioCmt-Tmp-Rett



Tipo	D1-D2	U1-U2	A	B	Spes.	D	E	F	G	H	I	L	M	Z	Q(L/1')	Rapp.Pil.
VODL 38	VODL/CC 38	G 3/8	G 3/8	141	65	30	8	40	17	22	51	52	92	-	8,5	37
VODL 12	VODL/CC 12	G 1/2	G 1/2	149	70	35	8	48	14	22	50,5	57	94	-	8,5	70
VODL 34	VODL/CC 34	G 3/4	G 3/4	184	90	40	10	70	10	30	65	66	102	-	10,5	100
VODL 100	VODL/CC 100	G 1"	G 1"	218	100	60	10	80	10	30	76	66	102	-	10,5	180
VODL/F 38		G 3/8	8	141	65	30	7,5	8	40	17	24	51	27	52	8,5	37
VODL/F 12		G 1/2	10	149	70	35	7,5	8	48	14	25	50,5	30	57	8,5	70
VODL/F 34		G 3/4	15	184	90	40	12	10	70	10	32	65	36	66	10,5	100
VODL/F 100		G 1"	19	220	100	60	10	10	55	35	35	76	37	66	10,5	180

molle (Bar)

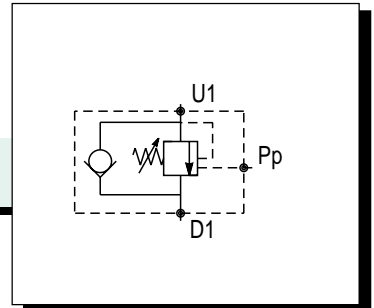
0-210  
**50-350**  
100-700



VALVOLE DI CONTROLLO DISCESA E DI BLOCCO BILANCIATE SEMPLICI  
CON PILOTA ESTERNO E FISSAGGIO A BULLONE  
SINGLE OVERCENTER VALVES, EXTERNAL PILOT OPERATED TYPE  
BOLT MOUNTING

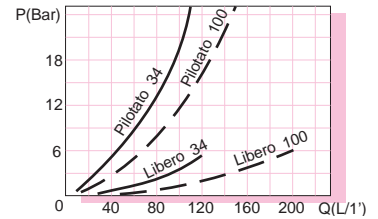
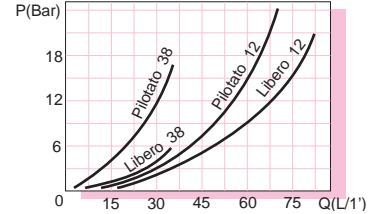
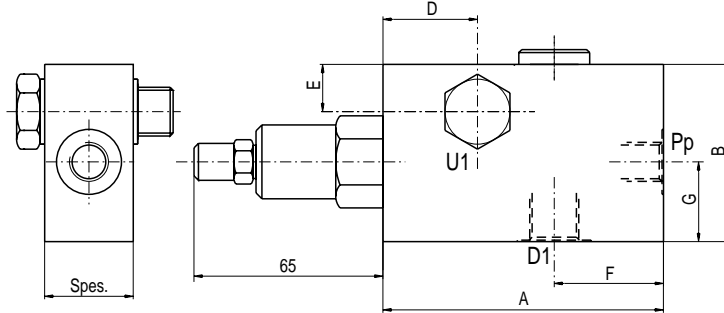
Tipo **VOSLP/SC/RO...**

Senza Cartuccia



**MATERIALI**

CORPO: Alluminio (210Bar)-Acciaio(350Bar)  
PART.INTERNI:AcciaioCmt-Tmp-Rett



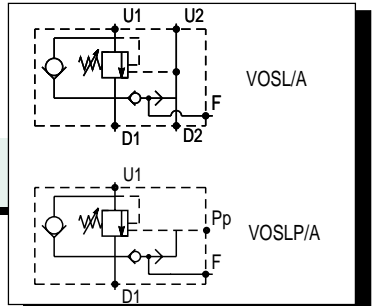
Tipo	D1-U1	A	B	Spes.	D	E	F	G	Q(L/1')	Rapp.Pil.	molle(Bar)
VOSLP/SC/RO 38	G 3/8	102	60	30	34	16	41	27	37	1:4 (1:3)	0-210
VOSLP/SC/RO 12	G 1/2	110	70	35	33	19	50	31	70	1:7 (1:3)	50-350
VOSLP/SC/RO 34	G 3/4	116	90	40	32	29	48	36	100	1:7 (1:3)	100-700
VOSLP/SC/RO 100	G 1"	153	100	60	35	31	70	38	180	1:7 (1:3)	100-700



VALVOLE DI CONTROLLO DISCESA E DI BLOCCO BILANCIATE IN LINEA,  
CON PILOTAGGIO INTERNO ED ESTERNO, PER ARGANI  
SINGLE OVERCENTER VALVES, INTERNAL AND EXTERNAL PILOT  
OPERATED TYPE WITH BRAKE UNCLAPING LINE MOUNTING

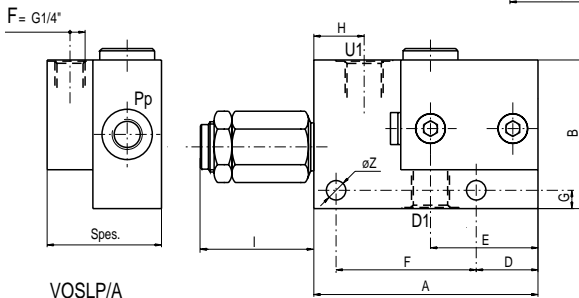
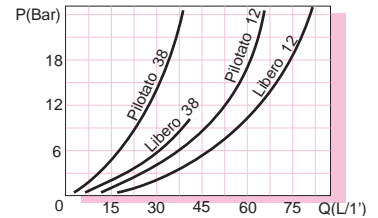
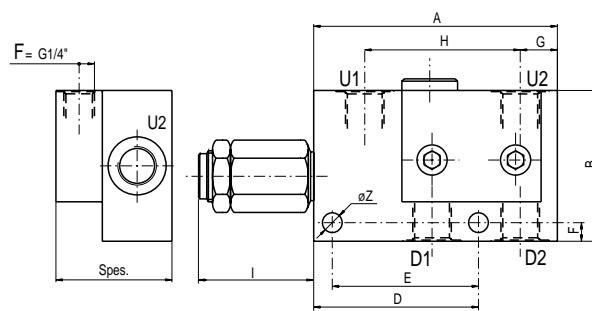
Tipo **VOSL/A... - VOSLP/A...**

A Cartuccia

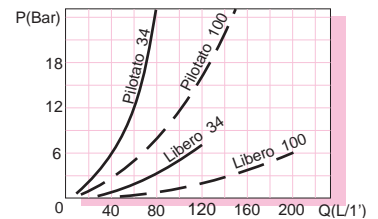


**MATERIALI**

CORPO: Alluminio (210Bar)-Acciaio(350Bar)  
PART.INTERNI:AcciaioCmt-Tmp-Rett



VOSL/A



Tipo	D1-U1	D2-U2	Pp	A	B	Spes.	D	E	F	G	H	I	Z	Q(L/1")	Rapp Pil	molle(Bar)
VOSL/A 38	G 3/8	G 3/8	-	105	65	50	71	63	8	16	67	52	8,5	37	1:2,8 (1:4)	0-210
VOSL/A 12	G 1/2	G 1/2	-	112	70	55	75	67	8	17,5	73	57	8,5	70	1:3 (1:7)	50-350
VOSL/A 34	G 3/4	G 3/4	-	140	90	60	88	75	10	22	88	66	10,5	100	1:2,9 (1:7)	100-700
VOSL/A 100	G 1"	G 1"	-	174	100	80	110	100	10	30	112	66	10,5	180	1:2,9 (1:7)	100-700
VOSLP/A 38	G 3/8	-	G 1/4	98	65	50	27	47	63	8	22	52	8,5	37	1:2,8 (1:4)	0-210
VOSLP/A 12	G 1/2	-	G 1/4	100	70	55	25	49	67	8	21,5	57	8,5	70	1:3 (1:7)	50-350
VOSLP/A 34	G 3/4	-	G 1/4	120	90	60	32	55	75	10	30	66	10,5	100	1:2,9 (1:7)	100-700
VOSLP/A 100	G 1"	-	G 1/4	140	100	80	30	64	100	10	30	66	10,5	180	1:2,9 (1:7)	100-700

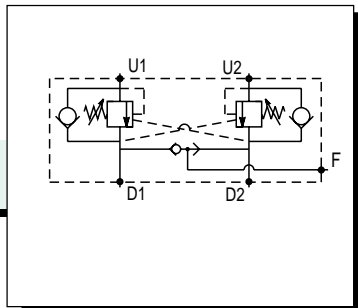
molle(Bar)

0-210  
50-350  
100-700

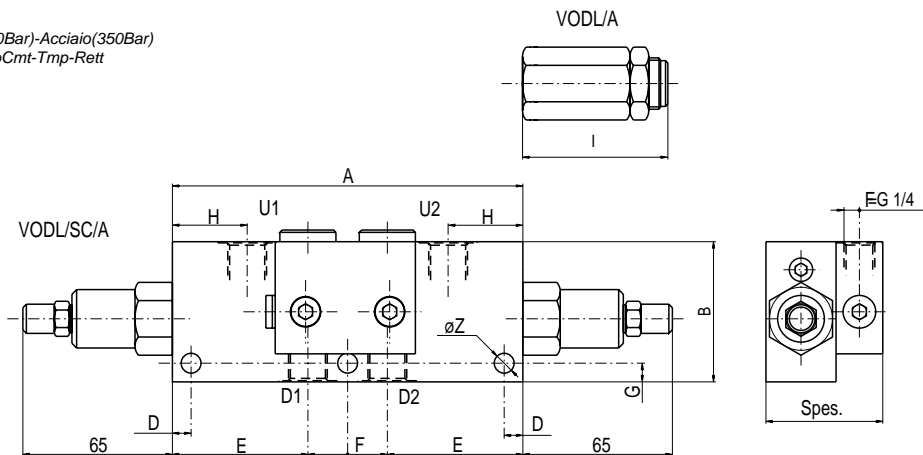


VALVOLE DI CONTROLLO DISCESA E DI BLOCCO BILANCIATE DOPPIE IN LINEA CON SBLOCCO FRENO  
 DOUBLE OVERCENTER VALVES WITH BRAKE UNCLAPING  
 LINE MOUNTING

Tipo **VODL/A... - VODL/SC/A...**



**MATERIALI**  
 CORPO: Alluminio (210Bar)-Acciaio(350Bar)  
 PART.INTERNI:AcciaioCmt-Tmp-Rett

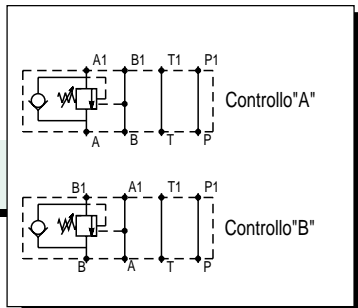


Tipo	D1-D2	U1-U2	A	B	Spes.	D	E	F	G	H	I	Z	Q(L/1')	Rapp.Pil.	molle (Bar)
VODL/A 38	G 3/8	G 3/8	141	65	50	7,5	51	39	8	22	52	8,5	37	1:3 (1:4)	0-210 <b>50-350</b>
VODL/A 12	G 1/2	G 1/2	149	70	55	8	50,5	48	8	22	57	8,5	70	1:3 (1:7)	
VODL/A 34	G 3/4	G 3/4	184	90	60	10	65	54	10	30	66	10,5	100	1:3 (1:7)	
VODL/A 100	G 1"	G 1"	218	100	80	10	76	66	10	30	66	10,5	180	1:3 (1:7)	
VODL/SC/A 38	G 3/8	G 3/8	150	60	50	8	58	34	8	32	-	8,5	37	1:3 (1:4)	100-700
VODL/SC/A 12	G 1/2	G 1/2	156	70	55	8	60	36	8	32	-	8,5	75	1:3 (1:7)	
VODL/SC/A 34	G 3/4	G 3/4	186	90	59	10	68	50	10	34	-	10,5	100	1:3 (1:7)	
VODL/SC/A 100	G 1"	G 1"	232	100	79	10	83	66	10	35	-	10,5	180	1:3 (1:7)	



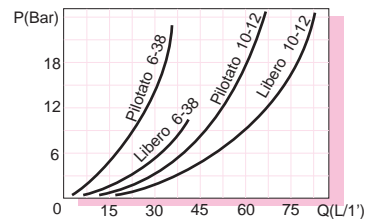
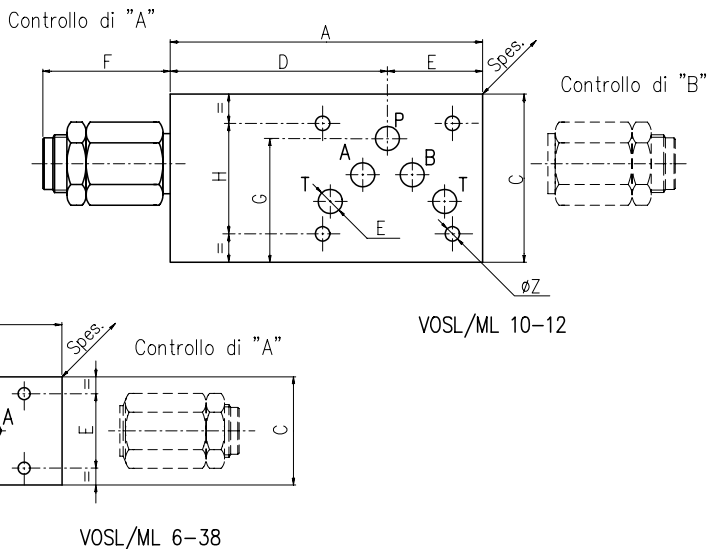
VALVOLE DI CONTROLLO DISCESA E DI BLOCCO BILANCIATE SINGOLE  
 MODULARI "NG 6-NG 10"  
 SINGLE OVERCENTER VALVES,INTERNAL PILOT OPERATED  
 TYPE,SANDWICH MOUNTING "NG 6-NG 10"

Tipo **VOSL/ML...**



**A Cartuccia**

**MATERIALI**  
 CORPO: Alluminio (210Bar)-Acciaio(350Bar)  
 PART.INTERNI:AcciaioCmt-Tmp-Rett



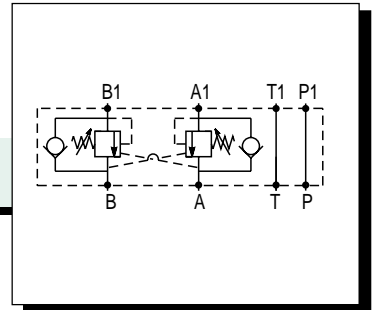
Tipo	A	Spes.	C	D	E	F	G	H	Z	Q(L/1')	Rapp.Pil.	molle (Bar)
VOSL/ML/ 6-38	117	64	45	32	31	6	52	-	5,5	37	1:4 (1:3)	0-210 <b>50-350</b> 100-700
VOSL/ML/10-12	130	80	70	40	10	54	51,7	46	6,5	70	1:7 (1:3)	

VALVOLE DI CONTROLLO DISCESA E DI BLOCCO BILANCIATE DOPPIE  
 MODULARI "NG 6 - NG 10"  
 DOUBLE OVERCENTER VALVES TYPE, SANDWICH  
 MOUNTING "NG 6 - NG 10"



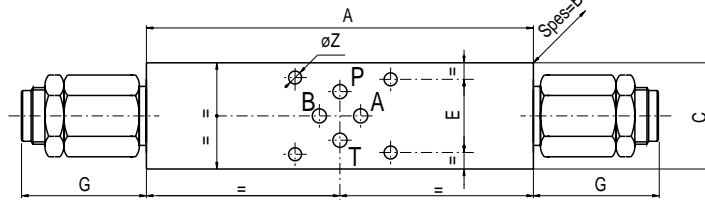
Tipo VODL/ML...

A Cartuccia

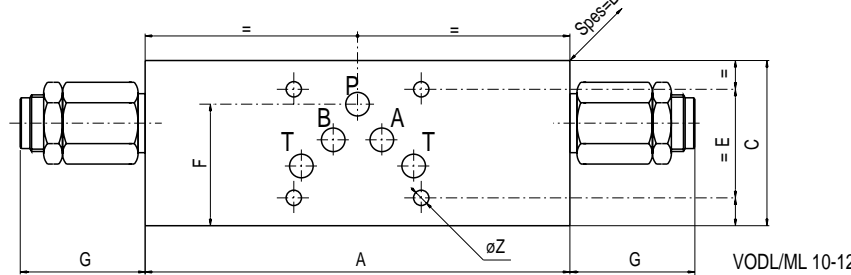
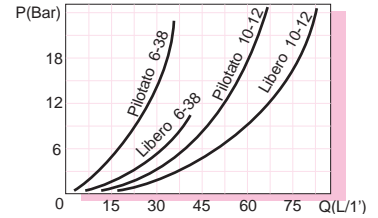


**MATERIALI**

CORPO: Alluminio (210Bar)-Acciaio(350Bar)  
 PART.INTERNI:AcciaioCmt-Tmp-Rett



VODL/ML 6-38



VODL/ML 10-12

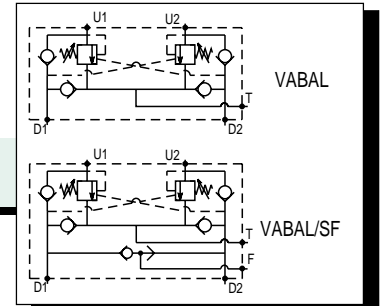
Tipo	A	B	C	E	F	G	Z	Q(L/1')	Rapp.Pil.	molle(Bar)
VODL/ML 6-38	164	64	45	31	-	52	5,5	40	1:4 (1:2,8)	0-210 50-350 100-700
VODL/ML 10-12	180	79	70	46	51,7	57	6,5	70	1:7,2 (1:3)	



VALVOLE ANTIURTO BLOCCO ANTICAVITAZIONE INCROCIATE IN LINEA  
 MOTION CONTROL AND LOCK VALVES (WITH AND WITHOUT BRAKE  
 UNCLAPING), LINE MOUNTING

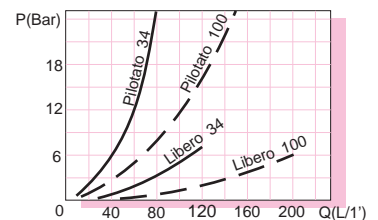
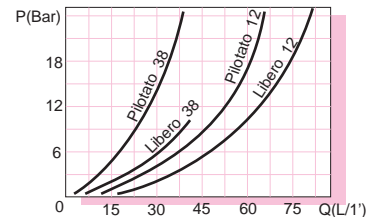
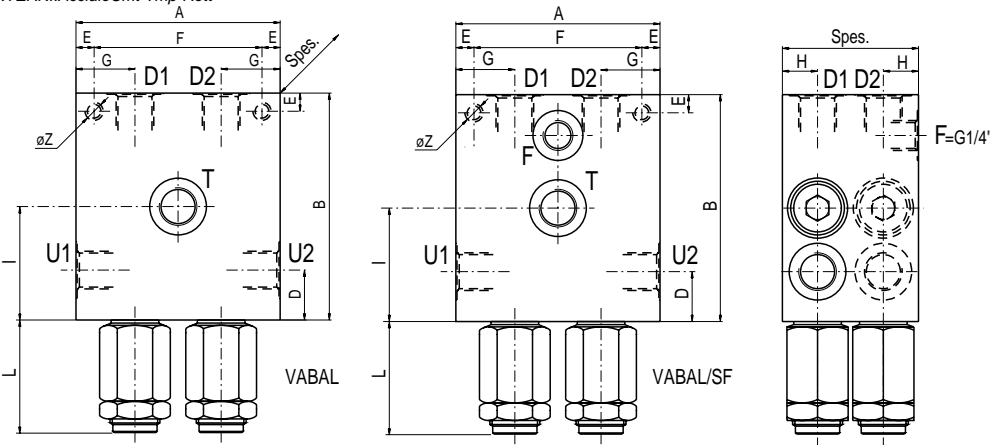
Tipo VABAL... VABAL/SF...

A Cartuccia



**MATERIALI**

CORPO: Alluminio (210Bar)-Acciaio(350Bar)  
 PART.INTERNI:AcciaioCmt-Tmp-Rett



Tipo	D1-D2	U1-U2	A	B	Spes.	D	E	F	G	H	Z	I	L	Q(L/1')	Rapp.Pil.
VABAL 38	G 3/8	G 3/8	90	100	60	22	8	74	26	15,5	M 8	50	52	37	1:3 (1:4)
VABAL 12	G 1/2	G 1/2	100	100	70	21,5	8	84	29	17,5	M 8	52	57	70	1:3 (1:7)
VABAL 34	G 3/4	G 3/4	120	120	85	30	10	100	33	21	M 10	65	66	100	1:3 (1:7)
VABAL 100	G 1"	G 1"	160	160	110	30	12	136	47	30	M 12	76	66	180	1:3 (1:7)
VABAL/SF 38	G 3/8	G 3/8	90	100	60	22	8	74	26	15,5	M 8	50	52	37	1:3 (1:4)
VABAL/SF 12	G 1/2	G 1/2	100	100	70	22	8	84	29	17,5	M 8	52	54	70	1:3 (1:7)
VABAL/SF 34	G 3/4	G 3/4	120	120	85	30	10	100	33	21	M 10	65	66	100	1:3 (1:7)
VABAL/SF 100	G 1"	G 1"	160	160	110	30	12	136	47	30	M 12	76	66	180	1:3 (1:7)

molle(Bar)

0-210  
**50-350**  
 100-700