

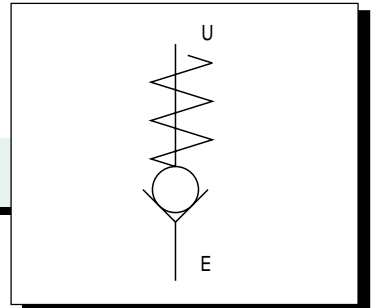
INDICE

VUS - VUC	pag.15
VUS/INC	pag.16
VUI	pag.16
VT	pag.17
VBD	pag.17

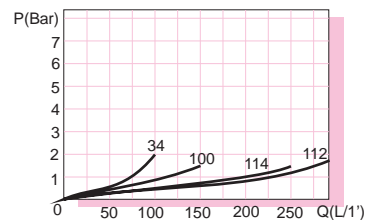
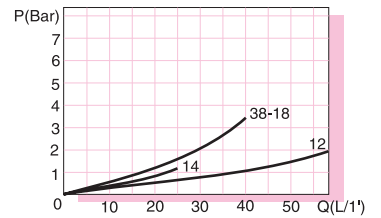
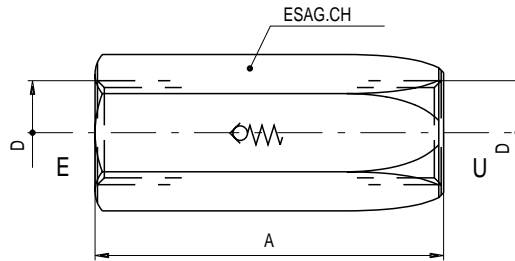


**VALVOLE UNIDIREZIONALI
CHECK VALVES
(BALL AND POPPET TYPE)**

Tipo VUS (TENUTA A SFERA) VUC (TENUTA A CONO)



MATERIALI
CORPO: Acciaio
PART. INTERNI: Acciaio Cmt-Tmp-Rett

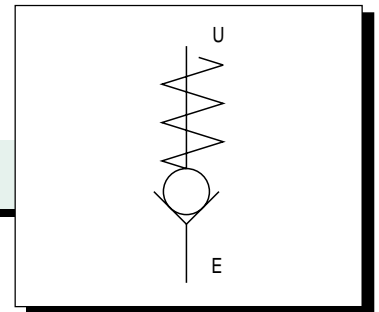


Tipo	D	A	CH	Q(L/1')	press.apertura(Bar)	press.esercizio(Bar)
VUS 14	G 1/4	56	19	24	0,5	400
VUS 38	G 3/8	64	24	40	0,5	400
VUS 18	M 18x1,5	64	24	40	0,5	400
VUS 12	G 1/2	72	28	60	0,5	350
VUS 34	G 3/4	84	36	100	0,5	300
VUS 100	G 1"	102	46	150	0,5	300
VUC 14	G 1/4	56	19	24	0,5	1,5 2 5 10 30
VUC 38	G 3/8	64	24	40	0,5	1,5 2,5 5 10
VUC 18	M 18x1,5	64	24	40	0,5	1,5 2,5 5 10
VUC 12	G 1/2	72	28	60	0,5	1,5 2,5 5 10
VUC 34	G 3/4	84	36	100	0,5	1,5 2,5 5
VUC 100	G 1"	102	46	150	0,5	1,5 2,5 5 10
VUC 114	G 1"1/4	130	55	250	0,5	1,5 2,5 5 10
VUC 112	G 1"1/2	147	60	350	0,5	1,5 2,5 5



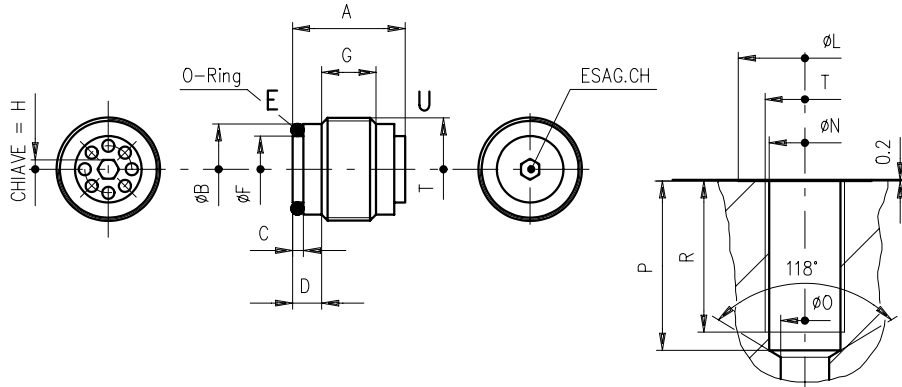
VALVOLE UNIDIREZIONALI DA INCASSO TENUTA A SFERA
CARTRIDGE CHECK VALVES (BALL TYPE)

Tipo **VUS/INC...**



MATERIALI

CORPO: Acciaio
PART.INTERNI: AcciaioCmt-Tmp-Rett

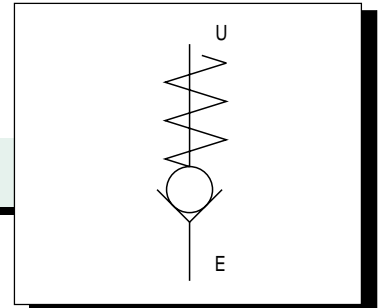


Tipo	A	B	C	D	T	F	G	CH	H	L	M	N	O	P	R	Q(L/1')	Dim. OR	P(apertura)	Pmax
VUS INC 14	17	11,3	1	5,5	G 1/4	9,2	6	3	3	22	G 1/4	11,8	8	28	25	19	9x1	0,5	350
VUS INC 38	18,5	14,8	1,8	5,5	G 3/8	11	7,5	4	3	25	G 3/8	15,2	9	30	27	28	10,8x1,8	0,5	350
VUS INC 12	22,5	18,5	1,8	6,5	G 1/2	14,2	9,5	6	5	30	G 1/2	19	12	36	32	50	14x1,8	0,5	350
VUS INC 34	28,5	24,1	2,7	7	G 3/4	19	14,5	8	8	36	G 3/4	24,5	17	42	37	80	18,7x2,6	0,5	350



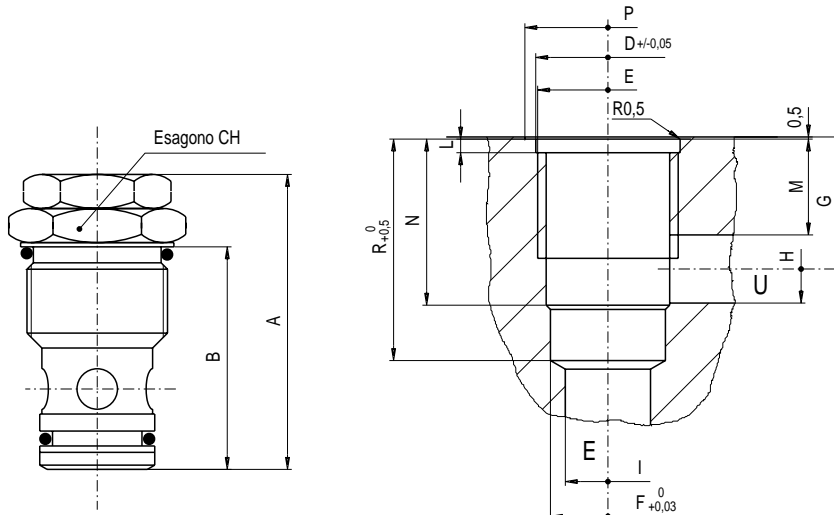
VALVOLE UNIDIREZIONALI DA INCASSO A CARTUCCIA
(TENUTA A CONO)
CARTRIDGE CHECK VALVES (POPPET TYPE)

Tipo **VUI...**

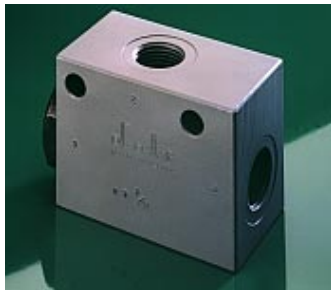


MATERIALI

CORPO: Acciaio(350Bar)
PART.INTERNI: AcciaioCmt-Tmp-Rett

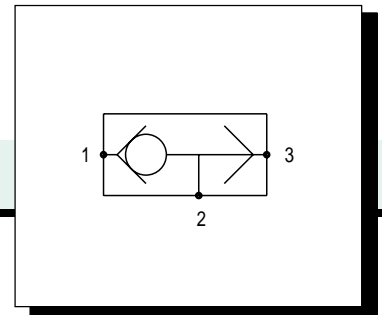


Tipo	A	B	CH	D	T	F	G	H	I	L	M	N	P	R	Q(L/1')	Taratura molle(Bar)
VUI 38	40	27	24	20,6	20x1,5	16	17	7	10	2,5	16	19	27	28	25	0,5
VUI 12	49	34,5	30	27,5	26x1,5	23,5	20,5	10	12	3,2	18	24	32	35	40	0,5
VUI 34	68	51	36	33,9	33x2	27	31	16	20	3,2	28	39	39	52	100	0,5
VUI 100	75	55	50	43,5	42x2	38	33	18	28	4,5	26	41	55	55	160	0,5

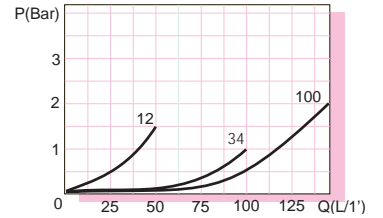
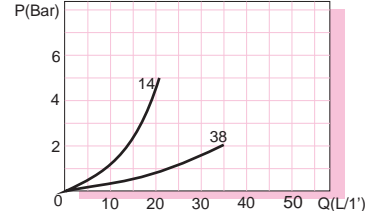
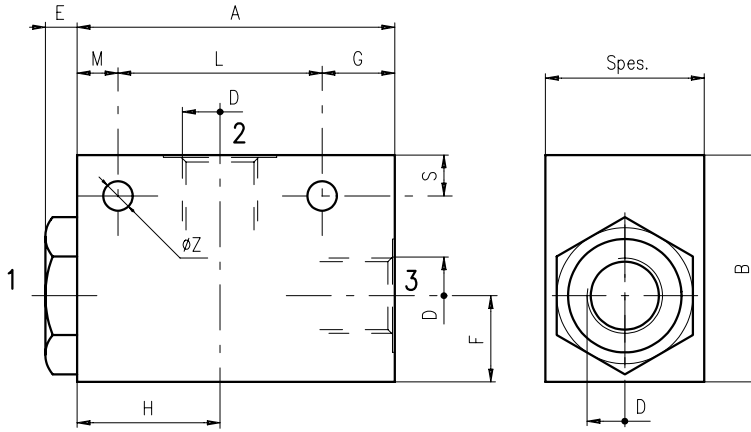


VALVOLE DI COMMUTAZIONE O VALVOLE A "T"
SHUTTLE VALVES, BALL TYPE

Tipo VT...



MATERIALI
CORPO: Acciaio (350Bar)
PART. INTERNI: Acciaio Cmt-Tmp-Rett

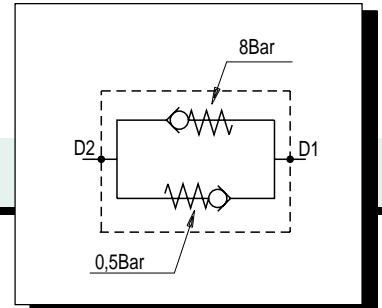


Tipo	D	A	B	Spes.	E	F	G	H	M	L	S	Z	Q(L/1')
VT 14	G 1/4	58	40	30	6,5	15	15	26	9	34	9	6,5	20
VT 38	G 3/8	70	50	35	6,5	19	16	31,5	9	45	9	6,5	35
VT 12	G 1/2	80	60	43	8,5	23	18	36	10	52	10	8,5	50
VT 34	G 3/4	90	68	50	8,5	26	19	41	11	60	11	8,5	100
VT 100	G 1"	100	82	60	10	32	22	45	12	66	11	10,5	150

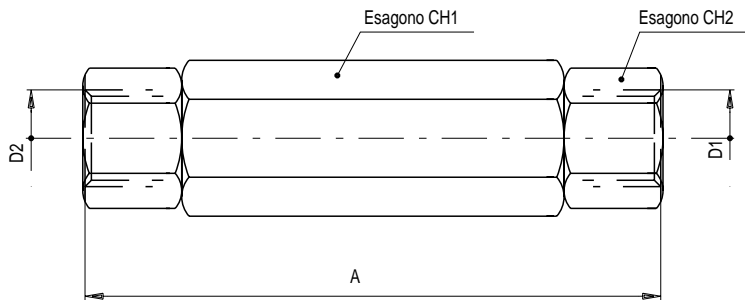


VALVOLE BIDIREZIONALI
CHECK VALVES, DOUBLE ACTING, LINE MOUNTING

Tipo VBD...



MATERIALI
CORPO: Acciaio
PART. INTERNI: Acciaio Cmt-Tmp-Rett



Tipo	D	A	CH1	CH2	Pressione di apertura (Bar)		Pmax	QI/1')
					Flusso libero	Flusso controll.		
VBD 38	G 3/8	102	30	27	0,5	8	350	25
VBD 12	G 1/2	129	30	27	0,5	8	350	40
VBD 34	G 3/4	141	46	41	0,5	8	300	70