

# IN LINE HIGH PRESSURE FILTERS MANIFOLD MOUNTED HF 735 SERIES



Replaces: HF 735 02 T E

The in-line medium pressure filters HF 735 series are specifically designed to be connected on the pressure line of the hydraulic circuit and provide versatility to safeguard the circuit components from contaminating particles.

- COMPACT DESIGN AND LOW WEIGHT
- MULTILAYER SYSTEM
- ALSO TO BE FLANGED DIRECTLY ON VALVE BLOCKS AND HYDRAULIC POWER-PACK

COMPLETE FILTER		
<b>MATERIALS</b>	Head	Spheroidal cast iron GS 450-10 UNI ISO 1083
	Bowl	Extruded steel
	Seals	Buna - Viton
<b>FLUID COMPATIBILITY CONFORMING TO ISO 2943</b>	With reference to ISO 6743/4	With fluid (HH-HL-HM-HR-HV-HG), water emulsion (HFAE-HFAS), and water - glycol (HFC) use filters with Buna seals.
		With synthetic fluid (HS-HFDR-HFDU-HFDS) use filters with Viton seals.
<b>FLOW RANGE</b>	up to	140 [l/min]
<b>MAX. WORKING PRESSURE</b>		32000 [kPa] 320 bar
<b>TESTING PRESSURE</b>		48000 [kPa] 480 bar
<b>BURST PRESSURE</b>		64000 [kPa] 640 bar
<b>OPERATING TEMPERATURE</b>	With Buna seals	- 30 + 90 [°C]
	With Viton seals	- 20 + 110 [°C]
FILTER ELEMENTS		
<b>MATERIALS</b>	End cap - Inner tube	Zinc plated steel (With water - glycol ask for cover with zinc)
	Filter media	Inorganic micro-fibre glass
<b>REMOVAL RATING</b>		Conforming to ISO 16889
<b>ELEMENT COLLAPSE PRESSURE RATING</b>	Conforming to ISO 2941	2000 [kPa] 20 bar (vers. LC)
		21000 [kPa] 210 bar (vers. HC)

Edition: 03/02.2006

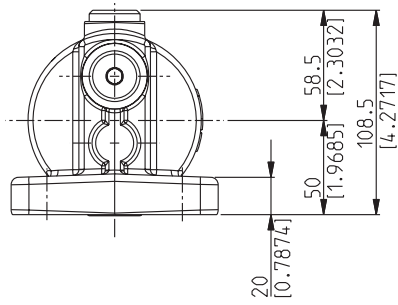
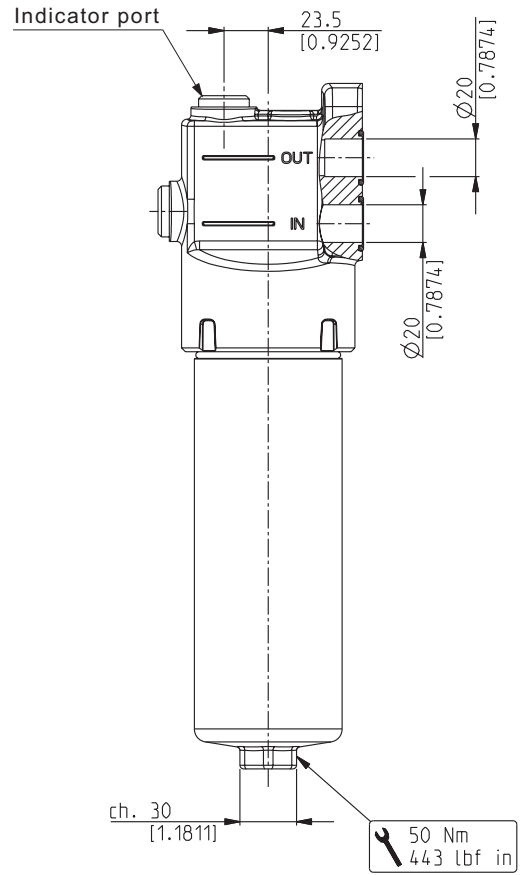
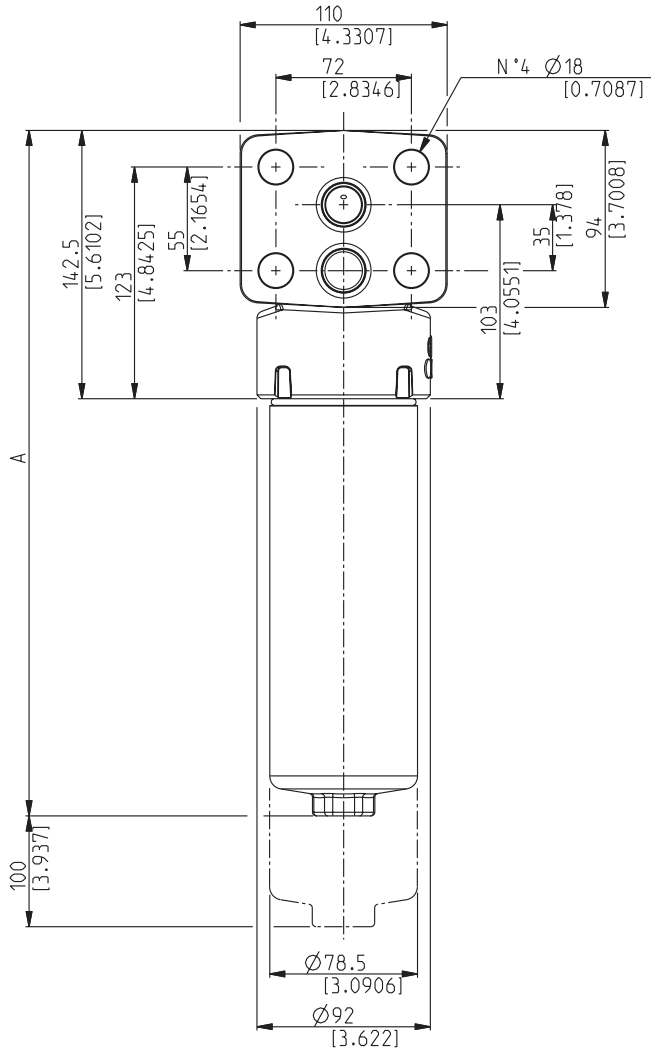
**IKRON S.r.l.**

43044 Lemignano di Collecchio (PR) - Italy Via C. Prampolini, 2  
Telephone: (+ 39) 0521 304911 - Fax (+ 39) 0521 304900 - <http://www.ikron.it> - e-mail: [ikron@casappa.com](mailto:ikron@casappa.com)



### TECHNICAL DATA HF 735-30

Replaces: 01/11.04



I022-002 - 03/02.06

ICAT\_022\_002\_HF735

Filter type	A
	mm
<b>HF 735-30.115</b>	256
<b>HF 735-30.223</b>	364

## GRAPHIC SYMBOLS

Filter	With By-pass valve	With visual differential indicator H	With By-pass valve and visual differential indicator H	With electr.-visual differential indicator U	With By-pass valve and electr.-visual differential indicator U

## HOW TO ORDER A COMPLETE FILTER

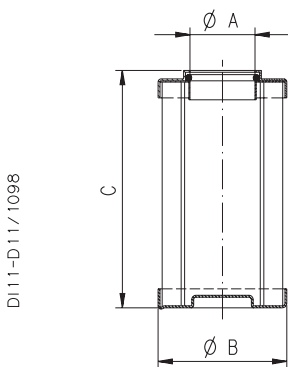
1	2	3	4	5	6	7	8									
HF735	-	20.080	-	AS	-	FG003	-	LC	-	B60	-	B	-	DD	-	G

1	Filter type	CODE
	See table page 2 and 3	HF 735-...
2	Filtering surface	CODE
	Standard	AS
	Multilayer	MS
3	Degree of filtration	CODE
	3 [µm] Micro-fibre glass	FG003
	6 [µm] Micro-fibre glass	FG006
	10 [µm] Micro-fibre glass	FG010
	25 [µm] Micro-fibre glass	FG025
4	Δp - Collapse pressure	CODE
	2000 [kPa]; 20 [bar]	LC
	21000 [kPa]; 210 [bar]	HC
5	By-pass valve	CODE
	Setting 600 [kPa]; 6 [bar]	B60
	Setting 350 [kPa]; 3,5 [bar]	B35
	None	B00

6	Seals	CODE
	Buna	B
	Viton	V
7	Indicator arrangement	CODE
	None	XN
	Arranged	XA
	Arranged with plug	DD
8	Indicators	CODE
	Without	G
	Visual differential indicator	H
	Visual electrical differential indicator	U
	Visual electrical differential indicator with thermostat	W

Standard  
 On request

## FILTERING ELEMENTS HF 735 - TECHNICAL DATA



Element type	Ø A	Ø B	C	Standard filtering surface (FG)
	mm	mm	mm	cm <sup>2</sup>
<b>HE K85-20.080</b>	25,5	46,5	87	415
<b>HE K85-20.106</b>			113	560
<b>HE K85-20.203</b>			210	1103
<b>HE K85-30.115</b>	27,5	54,5	122	908
<b>HE K85-30.223</b>			230	1808

Filtering elements with Δp - collaps pressure of 210 bar are also available (please consult our techn. department).

## HOW TO ORDER A REPLACEMENT ELEMENT

1	2	3	4	5				
HE K85-20.080	-	AS	-	FG003	-	LC	-	B

1	Element type	CODE
	See table	HE K85..
2	Filtering surface	CODE
	See table ref. 2 ♦	

3	Degree of filtration	CODE
	See table ref. 3 ♦	
4	Δp - collaps press.	CODE
	See table ref. 4 ♦	

5	Seals	CODE
	See table ref. 7 ♦	

♦ Table how to order a filter.